



Help

# Contents

Toolbox Tools	3
Standard Tools	4
View	4
Add Design	4
Select	4
Edit	4
Lettering	6
Monogram	7
Design Colors	7
Sew Sequence	7
Bounding Box	8
Shortcuts	9
Install Toolbox on your Windows Computer	10
Install Toolbox on your Apple Computer	12
Setup your personal Toolbox Account	16
Activate Toolbox Module	20
Tutorials	22

# Toolbox Tools



## View

This view provides the settings for what you see on the screen. You can also set up the hoop to position your design.



## Add Design

Click here to add designs from your Toolbox design folder or import other file formats or designs from the cloud directly into the file which is open on the screen.



## Select

Here you find all the different selection tools; multi design, object, and letter selection.



## Edit

Here you can find everything you need to edit what you have selected; duplicate, delete, group, scale, rotate, alignment, skew, settings and fill patterns for lettering.



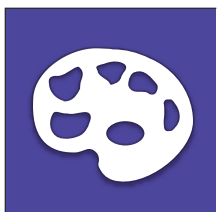
## Lettering

Click here to enter your text, select the lettering shapes, choose the alphabet or other settings for lettering and the text boxes.



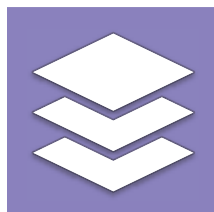
## Monogram

Here you can enter the text, choose the monogram and the decoration.



## Design Colors

Here you can find all the colors of your design sorted in groups. You are free to change any color of the whole design.



## Sewing Sequence

Here you can rearrange the sewing sequence of your design and change colors of individual parts in the design.

## Standard Tools



### Back

If you click on the back arrow, the file on the display is closed and saved.



### Undo

This function allows you to undo your previous actions step by step.



### Redo

If you have used „Undo“ too many times, this function will restore any undone actions step by step.



### Print

Click here to print your design.



### Export

Click here to save your file for your embroidery machine.

## View

### Zoom



#### Zoom 1:1

The view of the design corresponds the size as it will be embroidered.



#### Fit to Screen

Zooms in the design to fit the size of the screen.

### Grid/Origin



#### Show/hide Grid

Shows the grid or hides it in the background.



#### Show/hide Origin

Shows or hides the red crosshairs which indicates the center of the design.

### Choose Hoop



#### Show/hide Hoop

Shows or hides the hoop.



#### Show/hide Template

Shows or hides the template for BERNINA Hoops.

### Design Information

#### Design Information

Here you can find the following information: Name, Design Size, Number of Stitches, Colors, Number of Trims



## Add Design

### Import Design



#### Add Design

Import Sewing Formats

Click here to import designs featuring the following formats from your computer.

Formats: Brother PES, Bernina ART, Bernina EXP, Husqvarna VP3, Janome JEF, Viking/Husqvarna HUS, Tajima DST, Husqvarna/Pfaff VIP, Singer XXX, Elna SEW, Pfaff PCS, Melco OFM



#### Import from Bernina Cloud

Here you can import files directly from our BERNINA cloud without downloading them to your hard drive first.



## Select

### Select All



#### Select All

When you click here, everything will be selected.



### Select Design

#### Select Design

When activated, you can select multiple designs by clicking on them. Designs can be deselected when you click on them again. Please note: when activated you can only deselect when you click on the design.

### Grid/Origin



#### Select Letters

When activated, you can select and edit one or multiple letters. By clicking on the letter again, they are deselected. Please note: when activated you can only deselect when you click on the letter.

### Grid/Origin



#### Select Objects

When activated, you can select one or multiple objects and deselect objects by clicking on them again. Please note: when activated you can only deselect when you click on the object.



## Edit

### Copy/Delete/Group



#### Copy

Click here to copy your selection.



#### Delete

Click here to delete your selection.



#### Group

Click here to group the objects you have selected.

## Scale/Rotate



### Scale Proportional

Click here to scale your selection proportionally.



### Rotate 45°

Click here to rotate the selection by 45°.

## Mirror



### Mirror horizontal

Click here to mirror your selection horizontally.



### Mirror vertical

Click here to mirror your selection vertically.

## Alignment



### Align left

Aligns all the selected objects, designs and lettering to the left.



### Align vertical centered

Aligns all the selected objects, designs and lettering to the vertical center of the selection.



### Align right

Aligns all the selected objects, designs and lettering to the right.



### Align top

Aligns all the selected objects, designs and lettering to the top.



### Align horizontal

Aligns all the selected objects, designs and lettering to the horizontal center of the selection.



### Align bottom

Aligns all the selected objects, designs and lettering to the bottom.

## Skew



### Skew x

When changed, the selection is skewed along the x axis



### Skew y

When changed, the selection is skewed along the y axis

## Change Settings

### Density

You can change the density settings from 'Auto Density' to 'Manual Density'. If you are not experienced in embroidery, we recommend you to stay with 'Auto Density'. If you change the setting to Manual Density, you can edit the density of the stitches (spacing between the stitches).

### Underlay Stitches

The function of the Underlay stitches is to connect the fabric with the backing, stabilize the base for the embroidery, cover the surface

of the embroidery or create a 3D appearance of the embroidery. We have created 5 different profiles for you; all of them will be changed depending on the width of a letter in stitch direction to make sure you get an excellent result. In Toolbox, this the any underlay settings affect only lettering not the designs. for As for the designs, we are sure that the digitizer will decide on the best settings. for you.

### Default Auto Underlay

Works fine in general. We recommend activating this setting for common projects.

### T-Shirt/Polo Underlay

Activate this setting when you embroider on thin stretchable fabric.

### Towel Underlay

Activate this setting when you work with fabric featuring a long-pile texture such as toweling or fleece. It will create more underlay stitches to cover the fibers so they are not visible through the stitches.

### Broadcloth Underlay

This setting is ideal for sturdy fabric such as canvas or polyester material for bags. There will be less stitches so your design will be finished faster.

### No Underlay

If for some reason, you don't need underlay stitches, use this setting.

### Pull (Stretch?) Compensation

An embroidery is always pulled (stretched) in the stitch direction this because the stitches need to lay down nicely on the material. Due to the Pull Compensation, you can compensate this stretching or even use it to make you lettering wider. The default setting should work in all common cases. The pull compensation affects only lettering but does not designs.

### Tie in and out Stitches

The function 'Tie in and out stitches' is needed in every embroidery to make sure that the machine can start properly and the thread is not pulled out. It also supports the machine as soon as threads have to be trimmed. In addition to that, this function makes sure that the thread can't be pulled out when your embroidery motif is finished. You can choose between „Tie Every Element“ which means that you can cut the thread manually after every element or „Tie every Trim“.

### Trim Distance

Click here to adjust the trim distance after which Toolbox has to perform a trim. You will be able to see it With a larger setting, you will see a connection stitch within the distance between letters or objects. You can avoid these connection stitches by decreasing the trimming distance.

## Lettering Fill Patterns

### Lettering Fill Patterns

Here you can choose different fill patterns for your lettering. Be aware to make sure you get a good quality embroidery. The setting only applies at a stitch length of 5 mm.

# Tt Lettering

## Enter Text

Click here to change or to enter the text for your lettering. As soon as you enter text, the lettering will appear on your screen.

## Lettering Shape



### Lettering Shapes

Choose the shapes you would like for your lettering. Click on one of the shapes and the lettering will appear on screen. When you want to change the lettering shape, select another lettering by clicking on the lettering shape you want.

### Radius

The Radius field appears as soon as you have selected a lettering shape with a radius. To change the radius, enter the value you want in the box and press enter. Click on the triangles next to the field to increase or decrease the size of the radius. You can also change the radius by clicking the value box and scroll with your mouse.

## Choose Alphabets

To change the alphabet, you need to select your lettering first.

### Alphabet Category

To find alphabets faster, choose here the category you want here.

### Search Alphabets

If you remember the name or a part of the name, enter it here and the list of alphabets below shows you all alphabets which contain the entered text.



### Lettering Preview

If you want to see all the available letters of your alphabet or the recommended height, click on the preview button.



### Lettering Size

To change size of the letters you first need to select the lettering.

To change the size:

- enter the value you want in the box and press enter
- click on the triangles next to the box
- click into the value box and scroll with your mouse



### Lettering Width

To change the width of the letters you first need to select the lettering.

To change the width:

- enter the value you want in the box and press enter
- click on the triangles next to the box
- click into the value box and scroll with your mouse



### Slant

To change the slant of the letters you first need to select the lettering.

To change the slant:

- enter the value you want in the box and press enter
- click on the triangles next to the box
- click into the value box and just scroll with your mouse



### Distance between Letters

To change the distance between letters you first need to select the lettering.

To change the distance between letters:

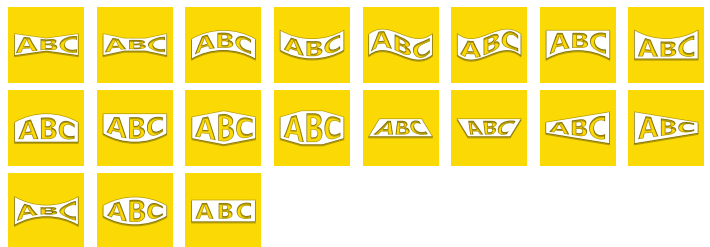
- enter the value you want in the box and press enter
- click on the triangles next to the box
- click in the value box and scroll with your mouse



### Text Alignment

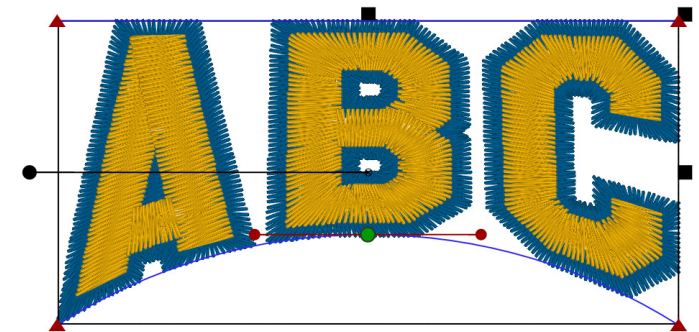
To change the alignment of the lettering you first need to select the lettering. Then click on the alignment you want.

## Text Box



### Text Box

Please note: we recommend to use the 'Text Box' only for straight line lettering. To access the 'Text Box' for lettering, you need to select the lettering first. If the 'Text Box' appears, you can click on the red triangles or circles to edit the text box.



## Monogram

### Enter Letters

#### Enter Letters

Click here to enter the letter(s) you want for your monogram. Important: you can only enter the number of letters specified in the alphabet you have selected. So, select the alphabet first before you enter the letters.



#### Monogram Size

Click here to define the size of the letters in your monogram.

To change the size:

- enter the value you want in the box and press enter
- click on the triangles next to the field
- click in the value box and scroll up/down using your mouse

### Choose Alphabet

#### Choose Alphabet

Click here to choose the alphabet you would like to use for your monogram.

### Choose Decoration

#### Choose Decoration

Click here to see all decorations which are suggested for the alphabet you have chosen.

#### Monogram Tip:

If you want to use another decoration as the one suggested, delete the letters and create a monogram without any decoration. Then align it with the selected decoration.

## Design Colors

### Design Colors

The 'Design Colors' are the colors which are used in your design. they are not object colors.



#### Change Design Colors

To change the design colors, you can either select them in the menu 'Thread Color' or on screen by clicking on the part of the design which contains the color to be changed. All the parts in the design which contain the color will be highlighted. After you have selected the color, click on the icon 'Change color' next to the color you have selected.

#### Thread Color

In the thread colors you can select the thread manufacturer and search below in the search field for the colors you want. When you want to search you can either search by number or name just type in what you want and the colors will appear in the list below. When you click on the color you want the color changes on screen.



## Sew Sequence

### Sewing Sequence

The 'Sewing Sequence' shows you all objects such as lettering, monogram and color blocks in your design in the sequence they will be sewn by your machine.



#### Collapse/Expand Color Blocks

Click here to see all objects, to colorize them, to change the sewing sequence or to expand the colors blocks. When you only want to see the sewing sequence of the colors, collapse the color blocks.



#### Change Color

When you want to change the color of a color block or any other elements in your sewing sequence, select them on screen within the sewing sequence and click on the icon 'Change color'.



#### Change sewing sequence

When you want to rearrange the sew sequence of your design, select the parts you want to move and click on the up or down arrow. The selection will be rearranged in the new sewing sequence. If you move the selection up, it will be embroidered earlier in the sew sequence. As more up something is es earlier it get embroidered.



#### Selection in Sewing Sequence

The function Sewing sequence allows you to rearrange objects which are right next to each other in the sewing sequence. By using the icons '+' and '-' you can add elements or objects to the selection.



#### Monogram

On the monogram icon, you can see a little triangle. Click on it and you see the colors of the monogram which you can also change. Important: You cannot change the sewing sequence of a monogram object.

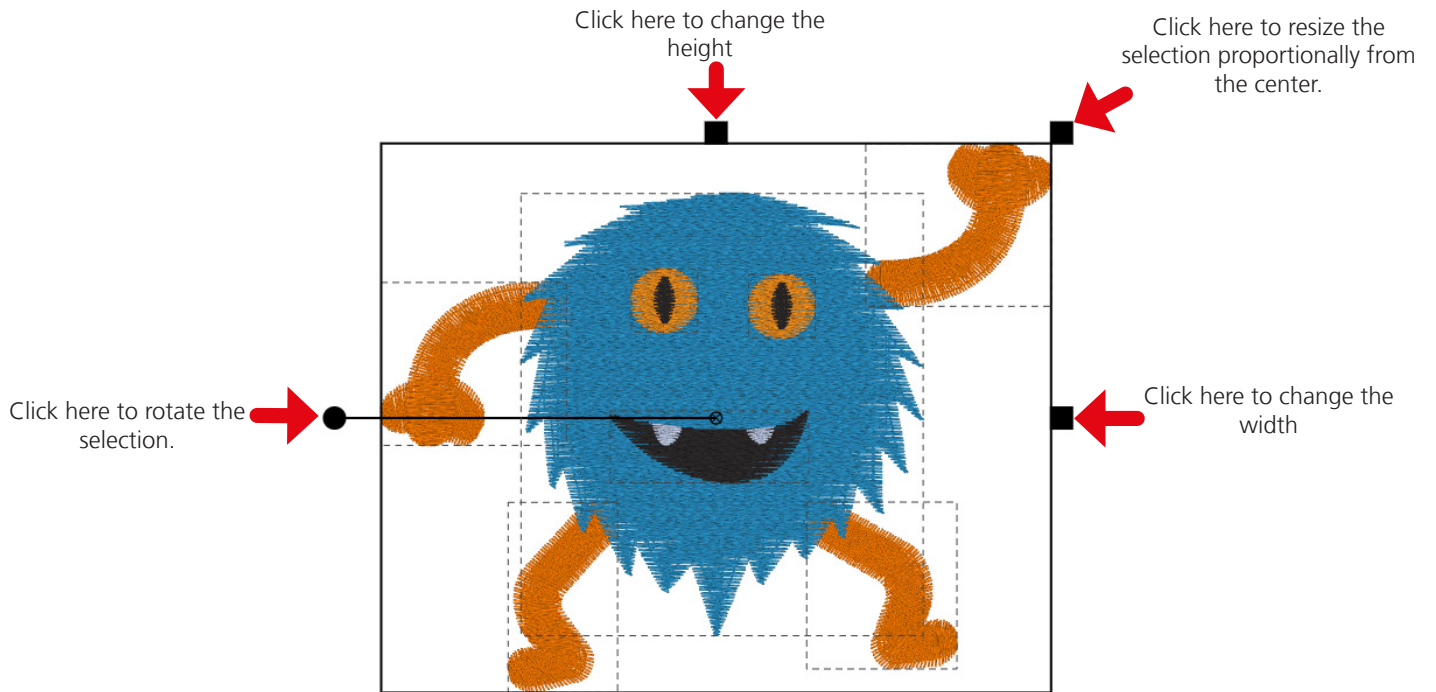


#### Lettering

On the lettering icon, you can see a little triangle. Click on it and you see the colors of the lettering which you can also change. Important: You cannot change the sewing sequence of a lettering object.

# Bounding Box

The bounding box gives you the possibility to scale and rotate the selection dynamically on screen. Don't resize designs more than +/- 20%. Otherwise you will get a message which tells you that the limit of the 20% has been exceeded. This does not occur for lettering only, but in case you have lettering combined with a design.





# Shortcuts

Mac	Windows	Description
<b>Selection</b>		
shift	shift	Multiple Design Selection click on selected design deselects design.
cmd	Ctrl.	Object selection
cmd + shift	ctrl. + shift	Multi-Object selection clicking on selected object deselects object.
cmd+a	ctrl. + a	Select all
cmd+alt+a	ctrl+alt+a	unselect all
<b>View</b>		
+	+	Zoom In
-	-	Zoom out
fn + arrow left	home	Fit to screen
arrow left	arrow left	Move selection to the left
arrow up	arrow up	Move selection up
arrow down	arrow down	Move selection down
arrow right	arrow right	Move selection to the right
<b>Edit</b>		
delete	delete	Deletes selection
backspace	backspace	Deletes selection
cmd + d	ctrl. + d	duplicate
cmd + g	ctrl. + g	group
cmd+alt+g	ctrl+alt+g	ungroup
cmd + f	ctrl. + f	mirror horizontal
cmd + m	ctrl. + m	mirror vertical
cmd + arrow left	ctrl. + arrow left	align left
cmd + arrow up	ctrl. + arrow up	align top
cmd + arrow down	ctrl. + arrow down	align down
cmd + arrow right	ctrl. + arrow right	align right

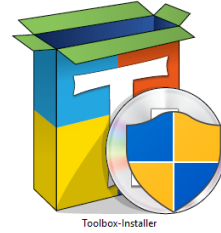
# Install Toolbox on your Windows Computer

## Download Toolbox

You can find the download for Toolbox here [www.bernina.com/toolbox-download](http://www.bernina.com/toolbox-download). Click on the link and save the installer on your computer.

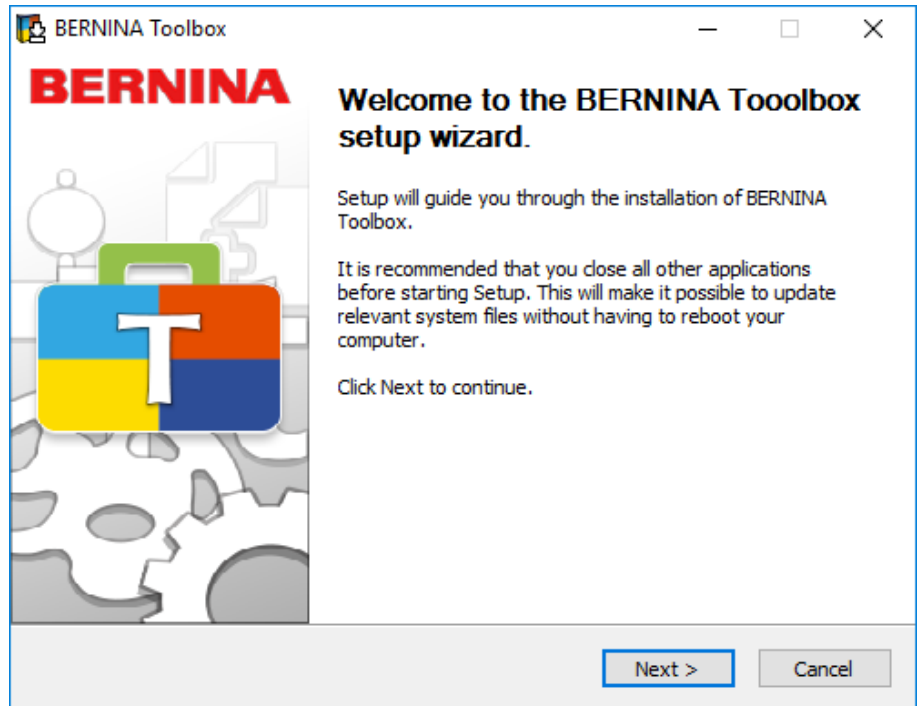
## Install Toolbox

Go to the location on your computer where you have saved the Toolbox installer (by default Downloads). Double-click on the installer which you can see on the right side.



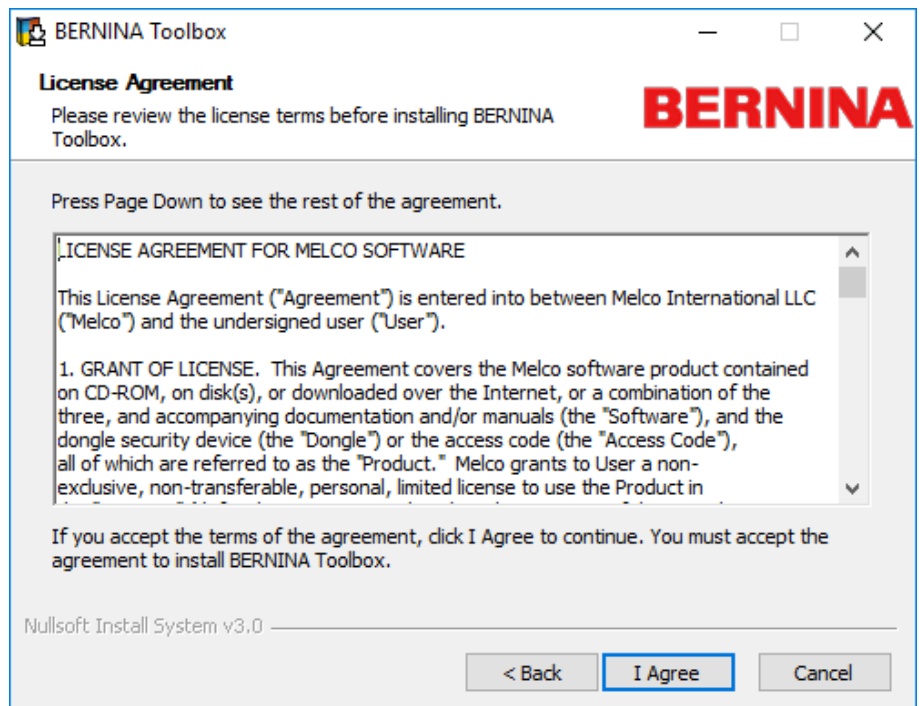
## Step 1

Please close all other running applications on your computer.



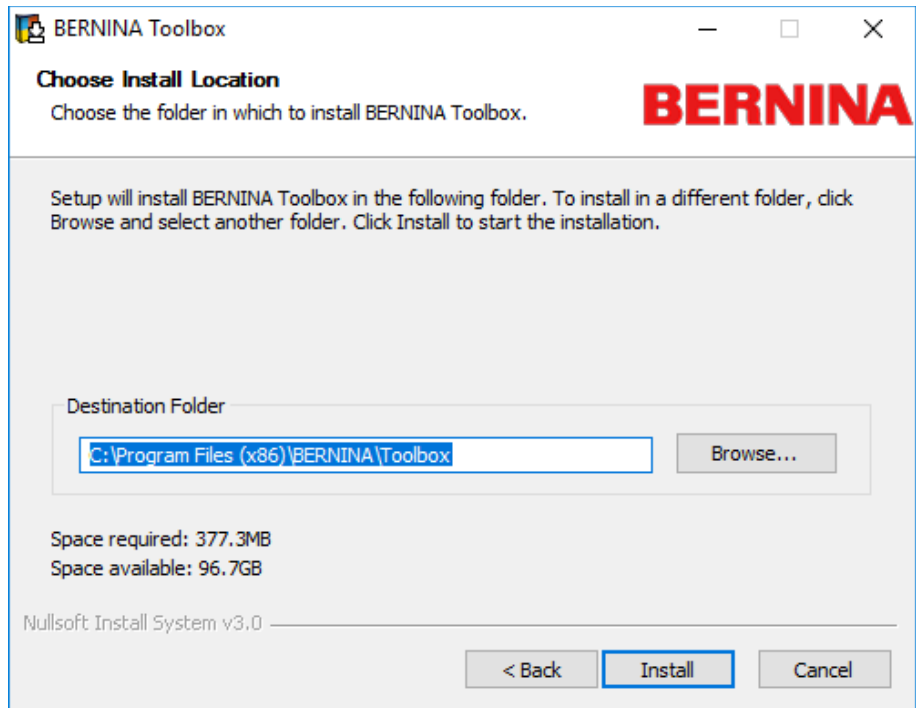
## Step 2

Accept the license agreement.



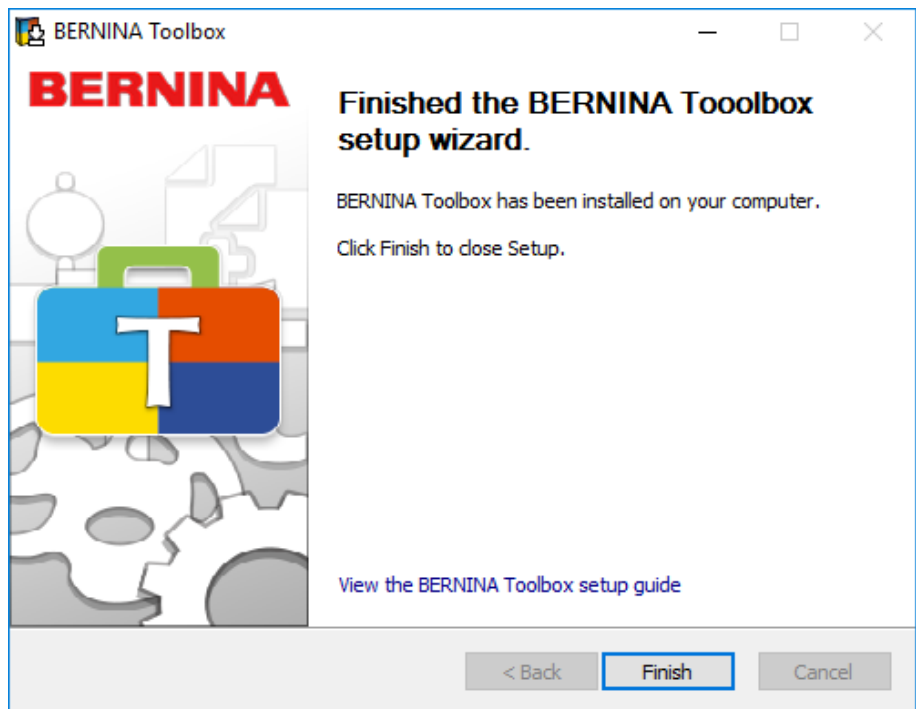
### Step 3

Choose the folder where you want to install Toolbox. If possible, don't change the location.



### Step 4

Finalize the installation by clicking on 'Finish'.



# Install Toolbox on your Apple Computer

## Download Toolbox

You can find the download for Toolbox here [www.bernina.com/toolbox-download](http://www.bernina.com/toolbox-download) . Click on the link and save the installer on your computer.

To install Toolbox you need to be the administrator or you need his username and Password.



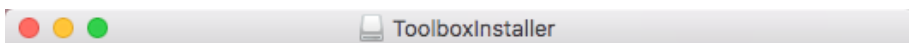
Toolbox-  
Installer.dmg

## Install Toolbox

Go to the location on your computer where you have saved the Toolbox installer (by default Downloads). Double-click on the installer which you can see on the right side.

## Step 1

Drag the Toolbox Icon to the application folder.



made to create **BERNINA**



Toolbox

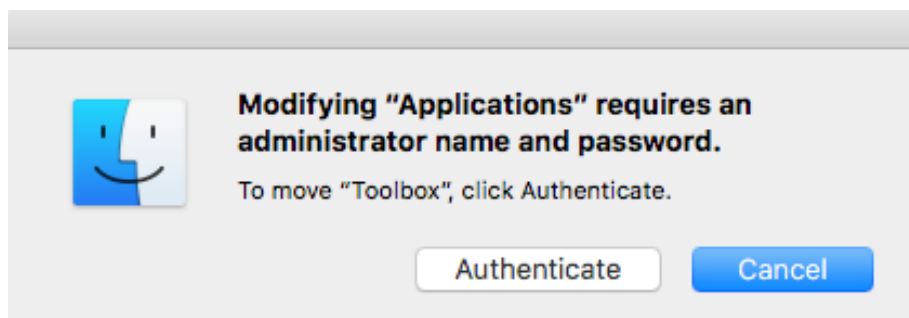


Applications

Drag the Toolbox icon to the Applications folder.

## Step 2

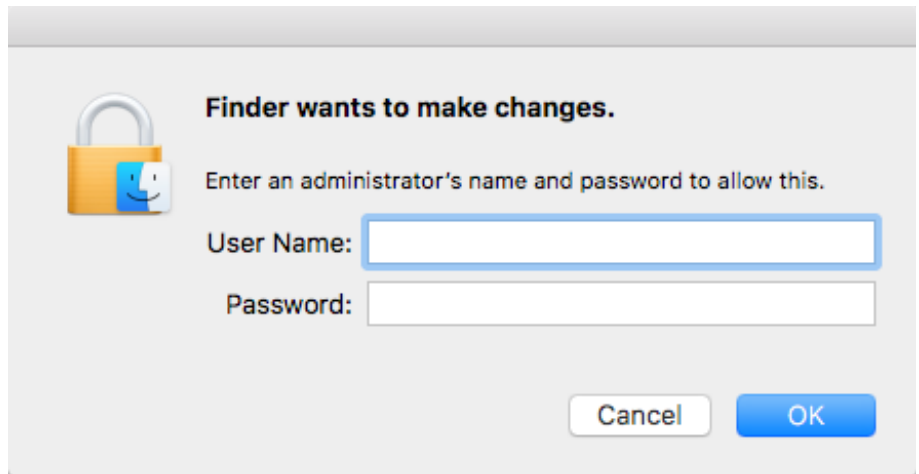
Click on Authenticate



made to create **BERNINA**

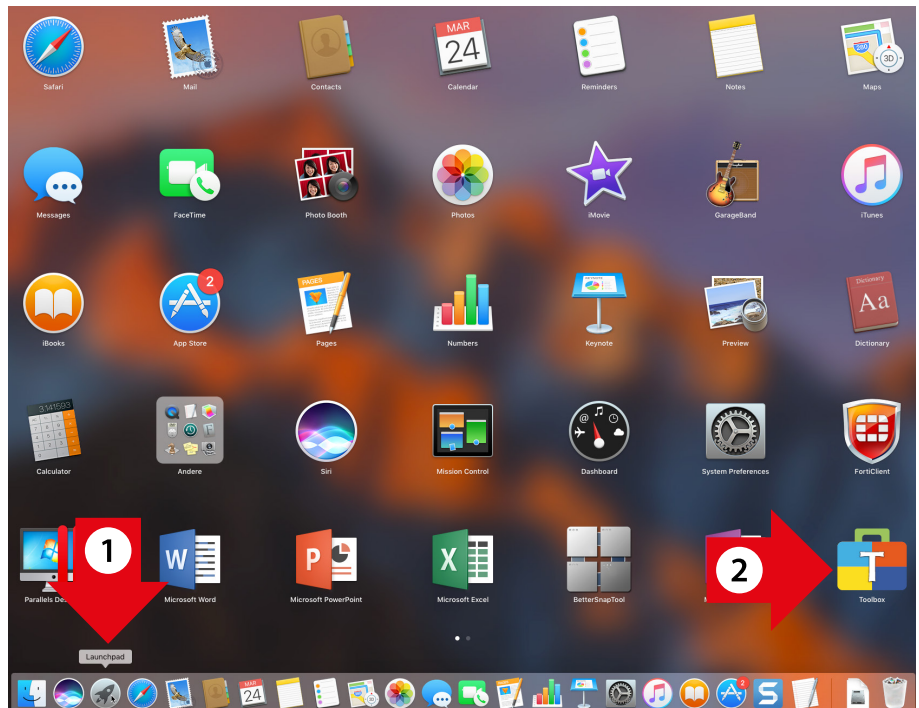
**Step 3**

Enter User Name and Password and click on "OK"



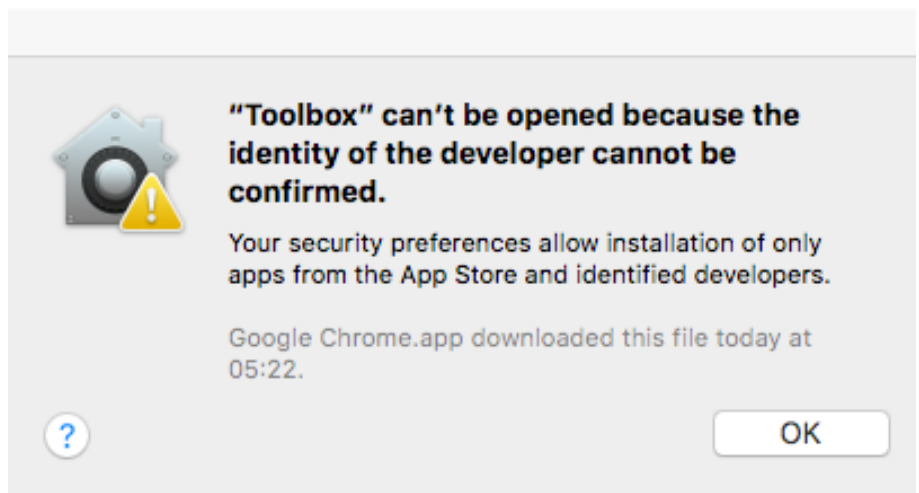
**Step 4**

- 1. Click on "Launchpad"
- 2. Click on Toolbox

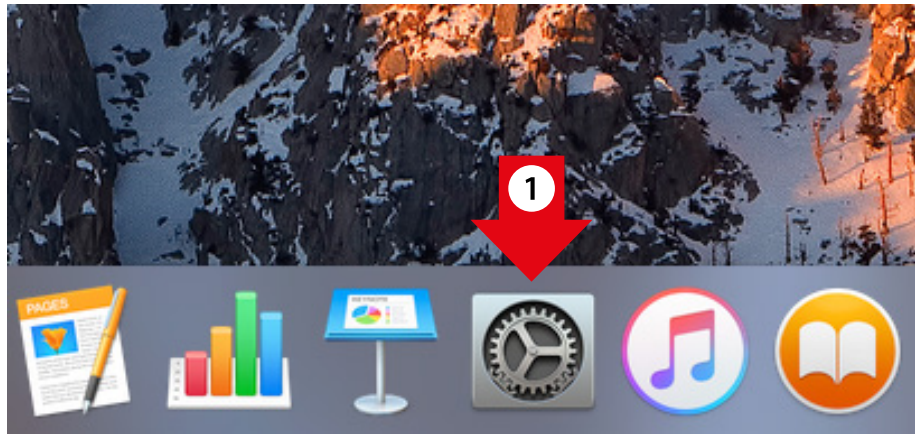


**Step 5**

Click on "OK"



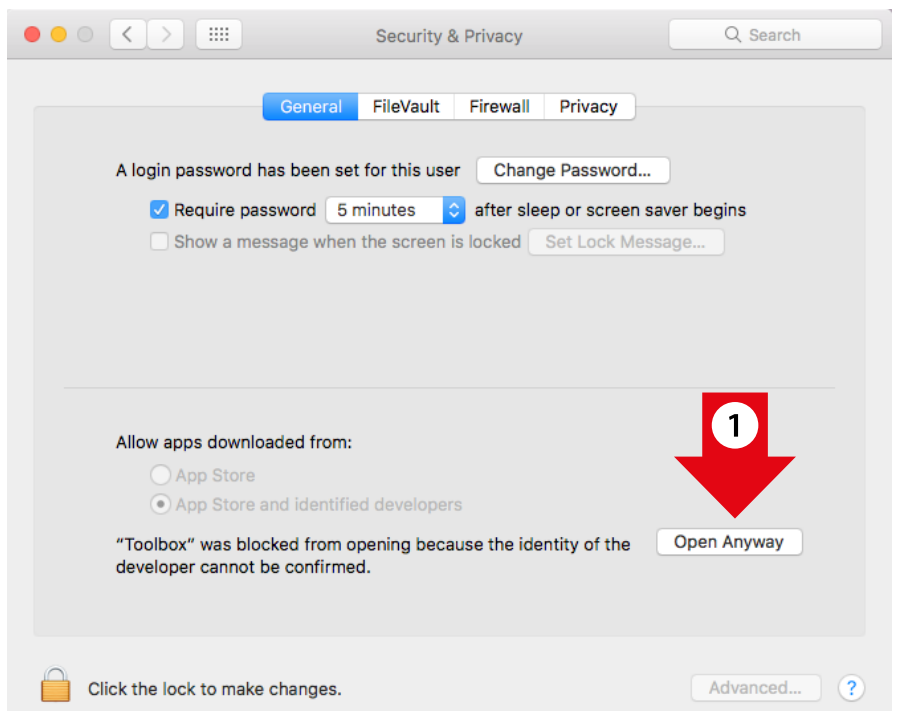
**Step 6**  
Click on System Preferences



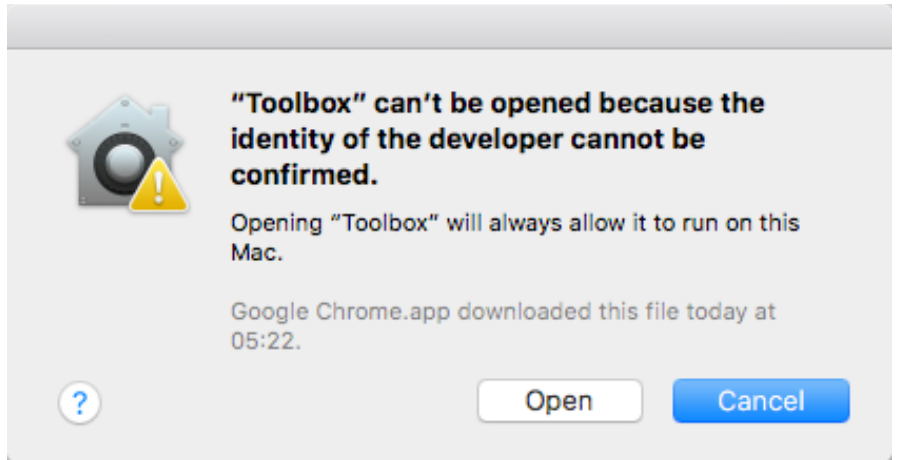
**Step 7**  
Click on "Security&Privacy"



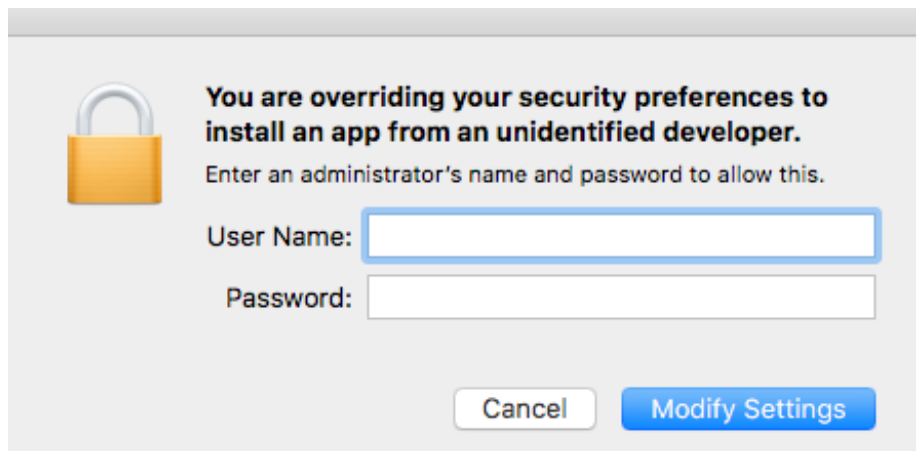
**Step 8**  
Click on "Open Anyway"



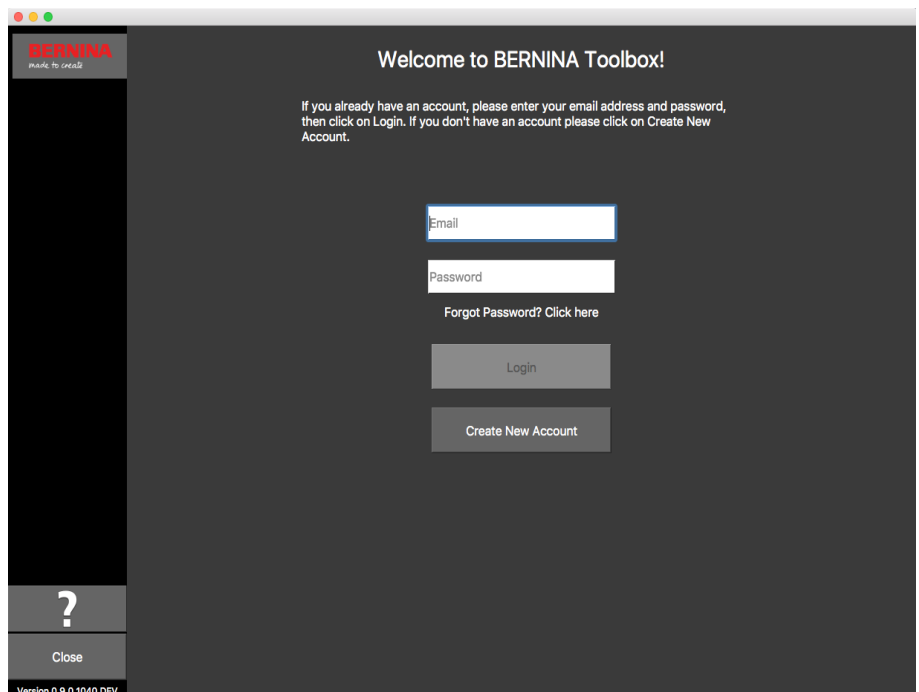
**Step 9**  
Click on "Open"



**Step 10**  
Enter "User Name" and "Password" and click on "Modify Settings"



**Step 11**  
Now Toolbox starts and you can either create an account or login



# Setup your personal Toolbox Account

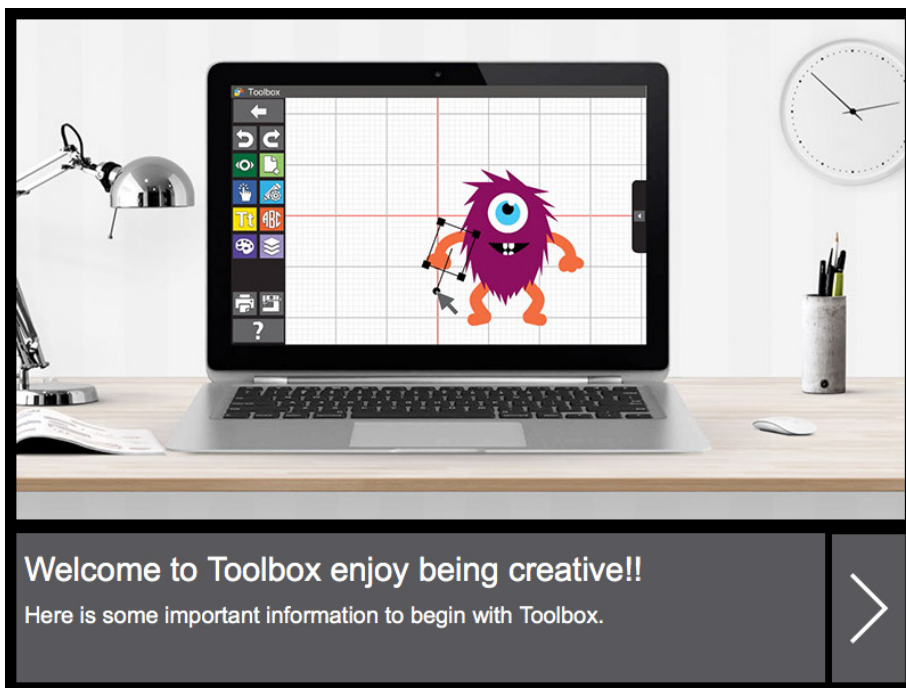
## Start Toolbox

Windows: Double-click on the Toolbox Icon on your Desktop.  
Mac: Click on the Toolbox Icon in your dock.



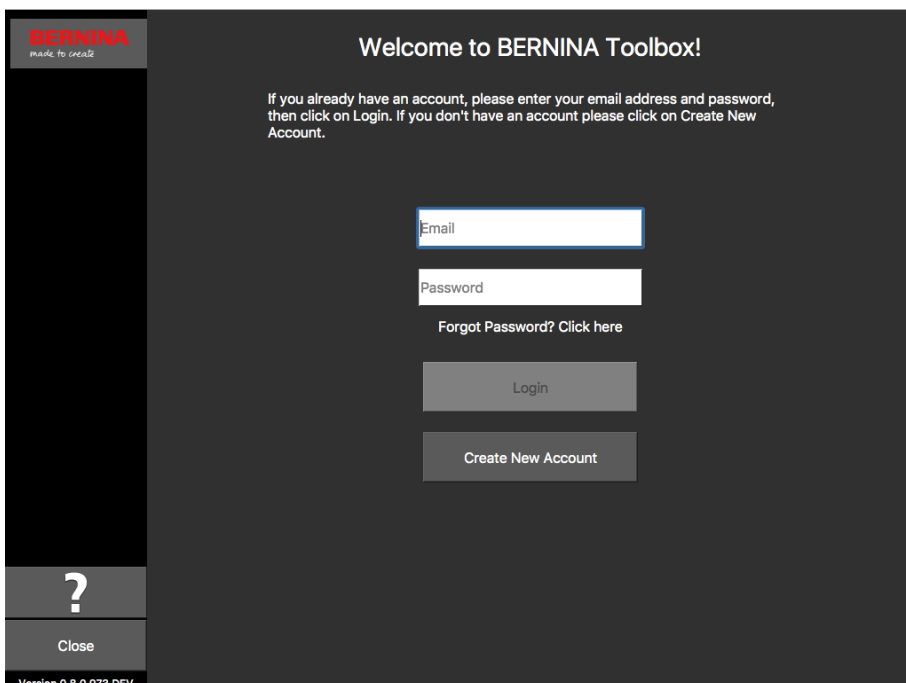
## Introduction Pop up

If you have enough space on your screen, move the pop up window at one side or close it by clicking on little cross in the top right corner. The pop up screen will appear again as soon as you restart Toolbox.



## Create new account

If you don't have a toolbox account yet, click on 'Create New Account'. Otherwise enter your email address and your password and click on „Login“.





## Enter Contact Details

Fill in all the boxes with your correct contact information.

**BERNINA**  
made to create

Create Account

First Name

Last Name

Street

City

Postal Code

United States of America

Select State

Email

8 alphanumeric characters with 1 number, 1 upper case and 1 lower case

password

?

Close

Version 0.8.0.973 DEV

## Password

Enter a password which you can keep in mind easily (we recommend you to write it on a piece of paper).

1. When you have given a correct email address, you will see the green check mark.
2. When your password meets the requirements and you have entered it twice correctly, you can see the green check mark.

When you have finished, click on 'Create Account'.

**BERNINA**  
made to create

90000

United States of America

Colorado

✓

8 alphanumeric characters with 1 number, 1 upper case and 1 lower case

..... ✓

..... ✓

By clicking "Create Account" I agree that I have read and accepted the Terms of Use and Privacy Policy.

Create Account

Cancel

?

Close

Version 0.8.0.973 DEV

## Verify Account

We need to make sure that the email address you entered is correct and yours for we will send you an email (see next picture) with a verification code. Please check your email if you have received the code. If so, enter it in the 'Enter Verification Code' box and click on 'Verify Account'.

1. This is the email containing the verification code which will be sent to you. If your e-mail address is incorrect, click on 'Change Email Address'.

2. The code sent to you is only valid for 1 hour. If you are interrupted, click on 'Request New Code' and we will send you a new code.

**BERNINA**  
made to create

### Verify Account

Your email address **Email address** is yet to be verified to create your account. An e-mail has been sent to the address on file. This contains a verification code to be entered below. Please check your e-mail and enter the code sent to you in the space provided to verify your account.

Verify Account

Request New Code ?

Change Email Address ?

?

Close

Version 0.8.0.973 DEV

made to create **BERNINA**

BERNINA of America

Products	Store Locator	Projects	8 Series	WeAllSew
----------	---------------	----------	----------	----------

03/07/2017

Hello John,

You have successfully created your Toolbox account. For security purposes, we ask that you verify your account by entering the following verification code in the Toolbox Verification Screen

If you have more than one verification code, please make sure to use the newest one when entering it in the Toolbox Verification Screen.

**Your verification code:**

**568615**

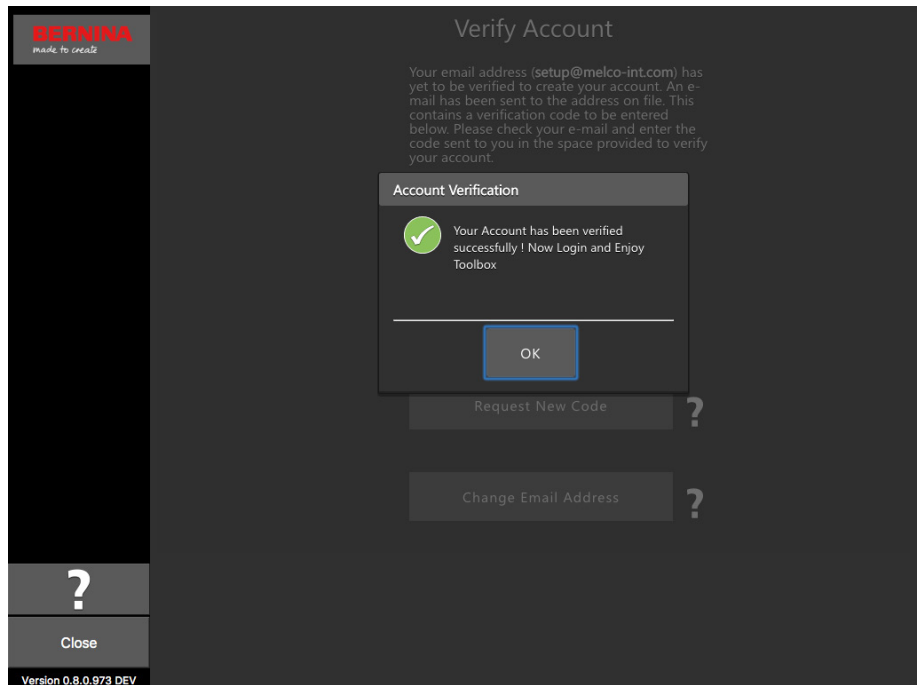
Enjoy Toolbox!

The BERNINA Team



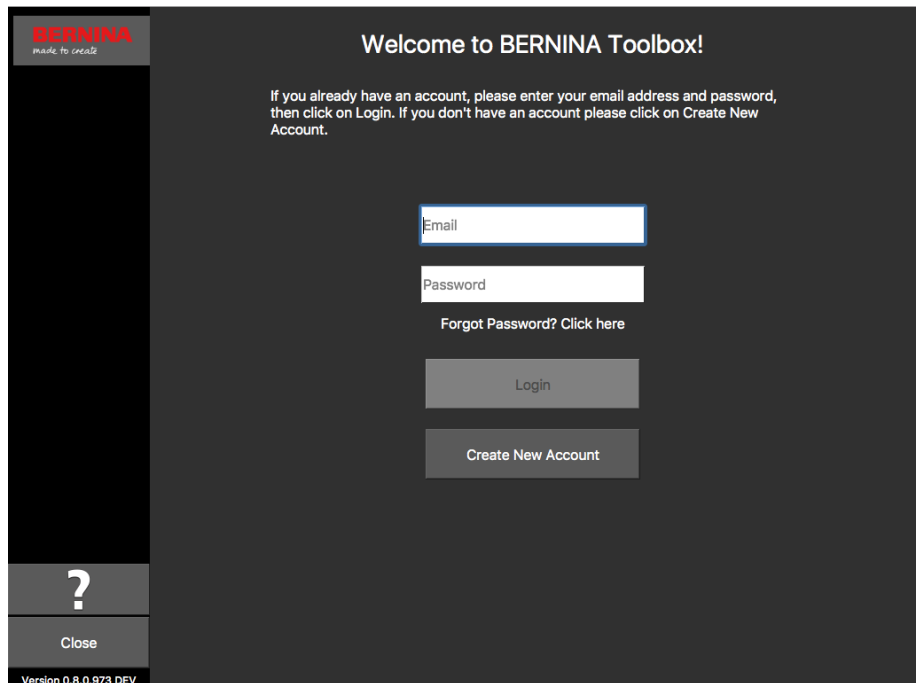
## Finalize creating your account

After having created your account successfully, you will see the pop up on the right. Click 'OK' to get to the login screen.



## Login and start Toolbox

Enter your email address and password and click on „Login“ and you can start using your Toolbox.

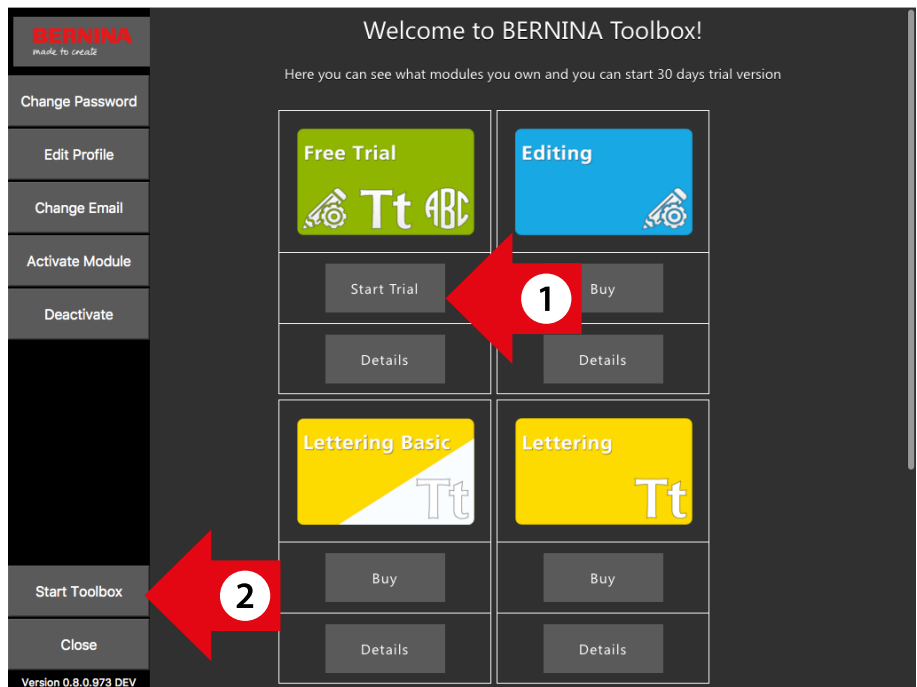


## Choose trial or activate a module

1. If you want to use the Trial version, simply click on 'Start Trial'

2. To start Toolbox click on 'Start Toolbox'.

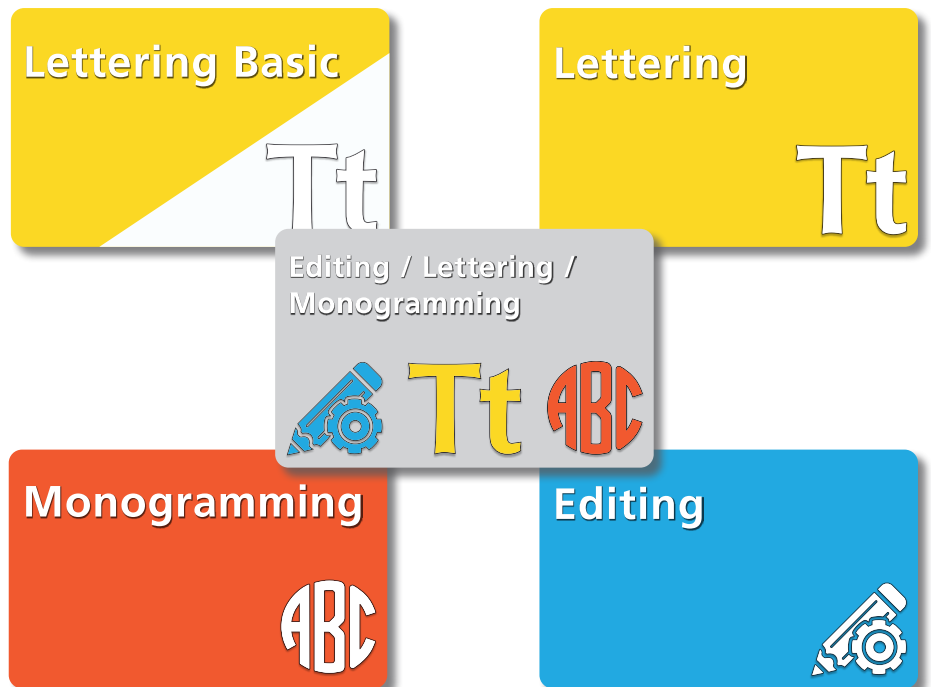
If you bought a Toolbox license code, please go to the next page.



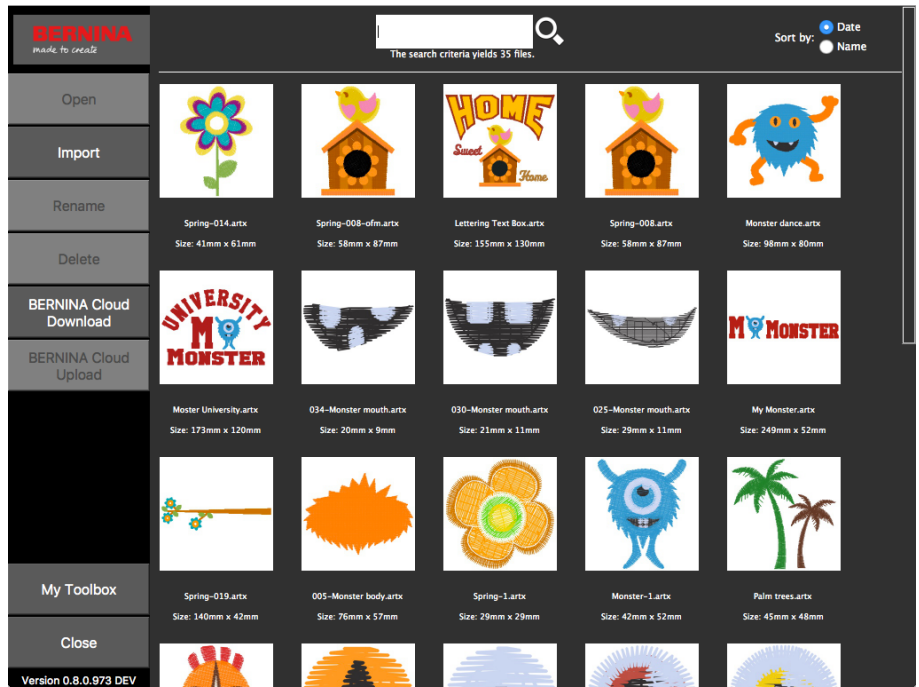
## Activate Toolbox Module

If you have purchased one of the Toolbox cards on the right, you need to activate the module in your Toolbox Account.

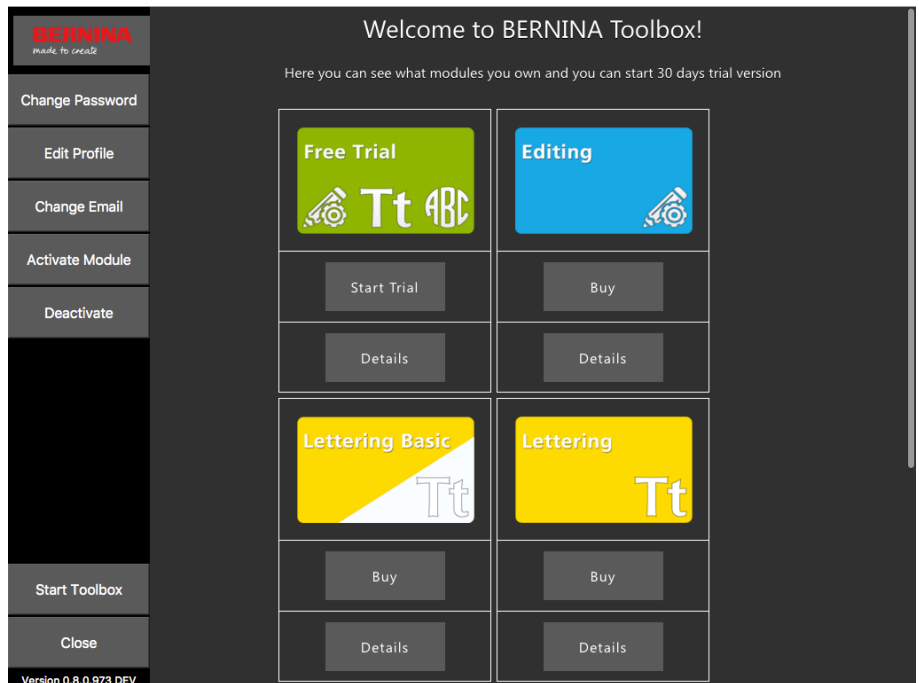
To do this, first start Toolbox.



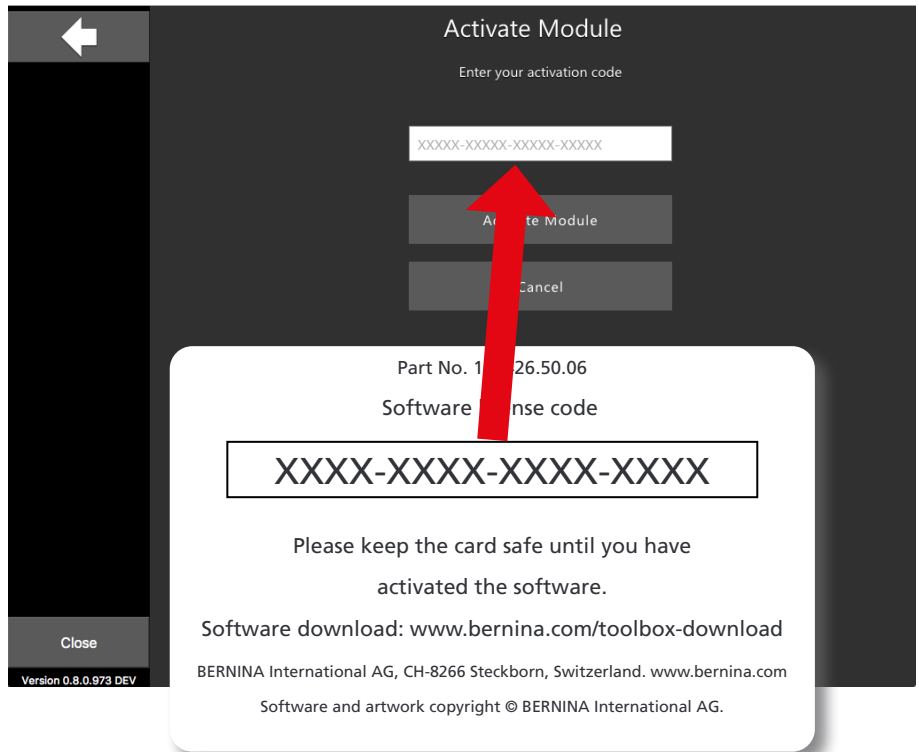
If you see the screen on the right, click on 'My Toolbox'. Otherwise go to the next step.



To activate a module, click on 'Activate Module'.

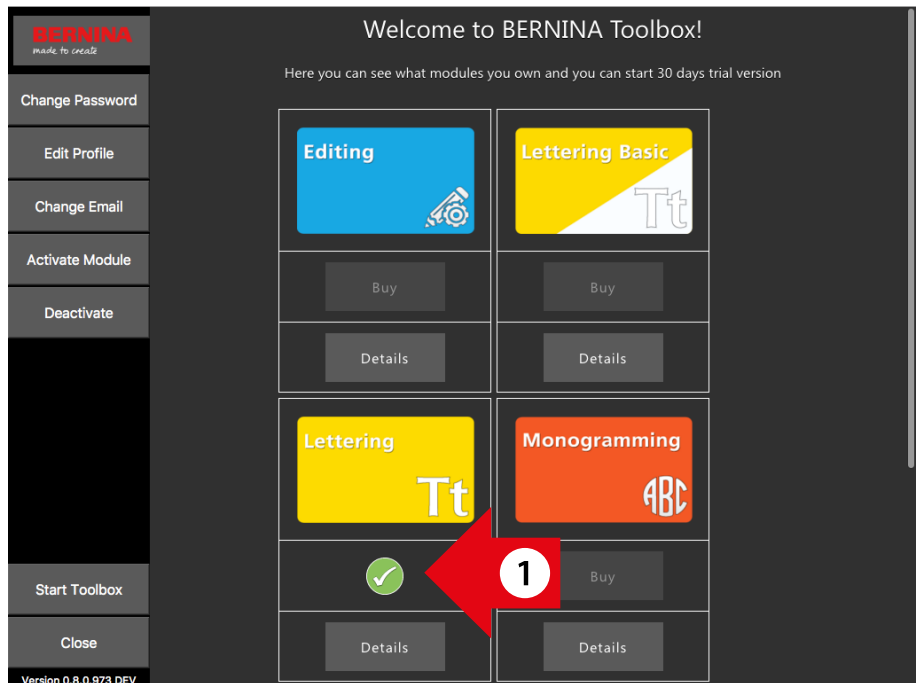


Enter the license code which is on your card into the activation code box and click on 'Activate Module'.



When the module is activated, you can see a green check mark below the module. In this case Lettering is activated.

Click now on the bottom left on „Start Toolbox“



## Tutorials

We have created Tutorials for you please visit:

[www.bernina.com/toolbox-tutorials](http://www.bernina.com/toolbox-tutorials)